

EN

MOZA CRP Pedals Manual



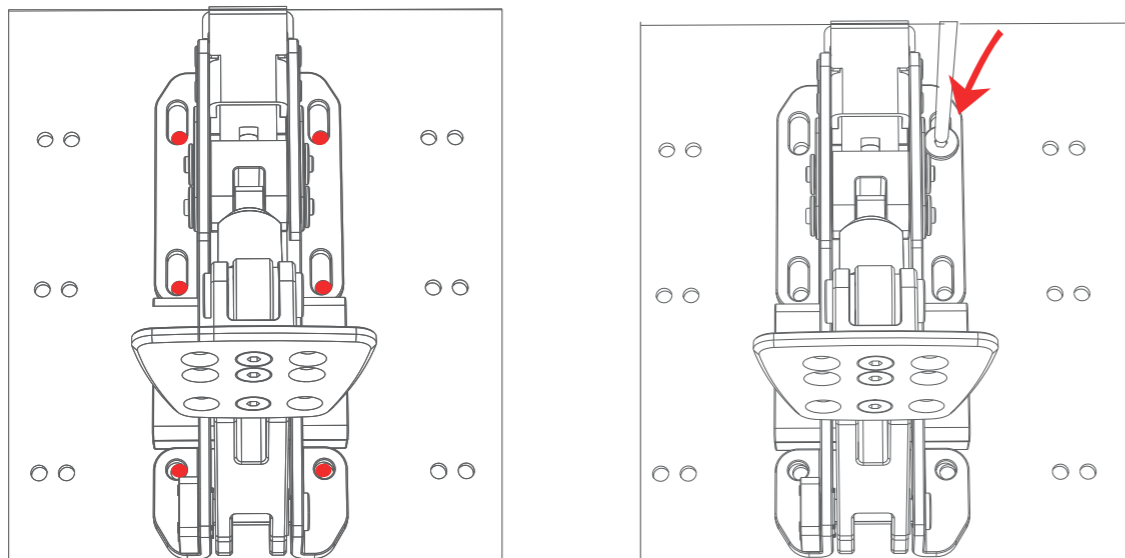
MOZA
R A C I N G

Product Description

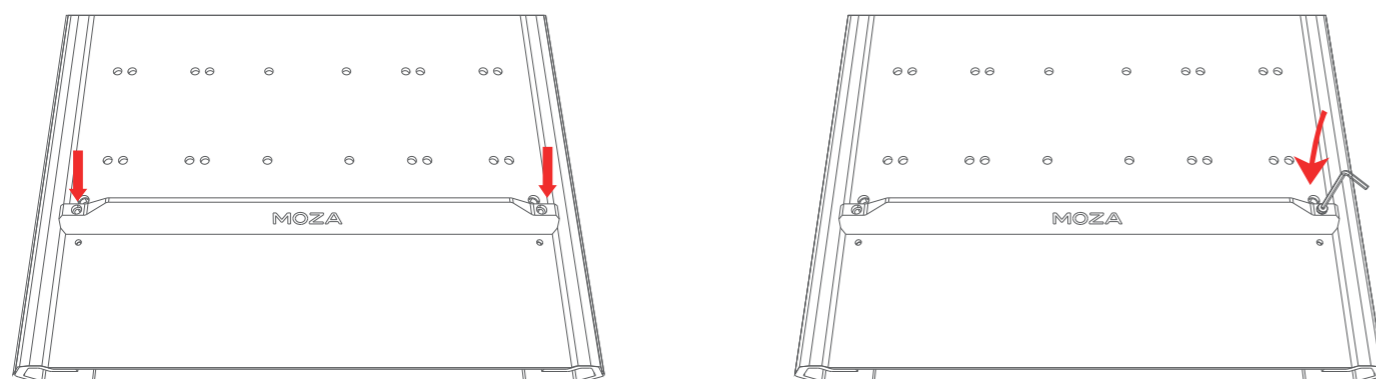
- CNC Aluminum Alloy.
- 100KG/220lbs load cell sensor.
- Three-stage clutch (for 3 pedals model)
- Organ type accelerator.
- Adjustable resistance, angle, and Travel.
- Tuning by Experienced Drivers.

CRP Pedal Installation

1. Install the pedals to the bottom plate and adjust the position. Install the screws and washers for each pedal. In order to ensure the stability of use, it is recommended to install all 6 screws for each pedal.



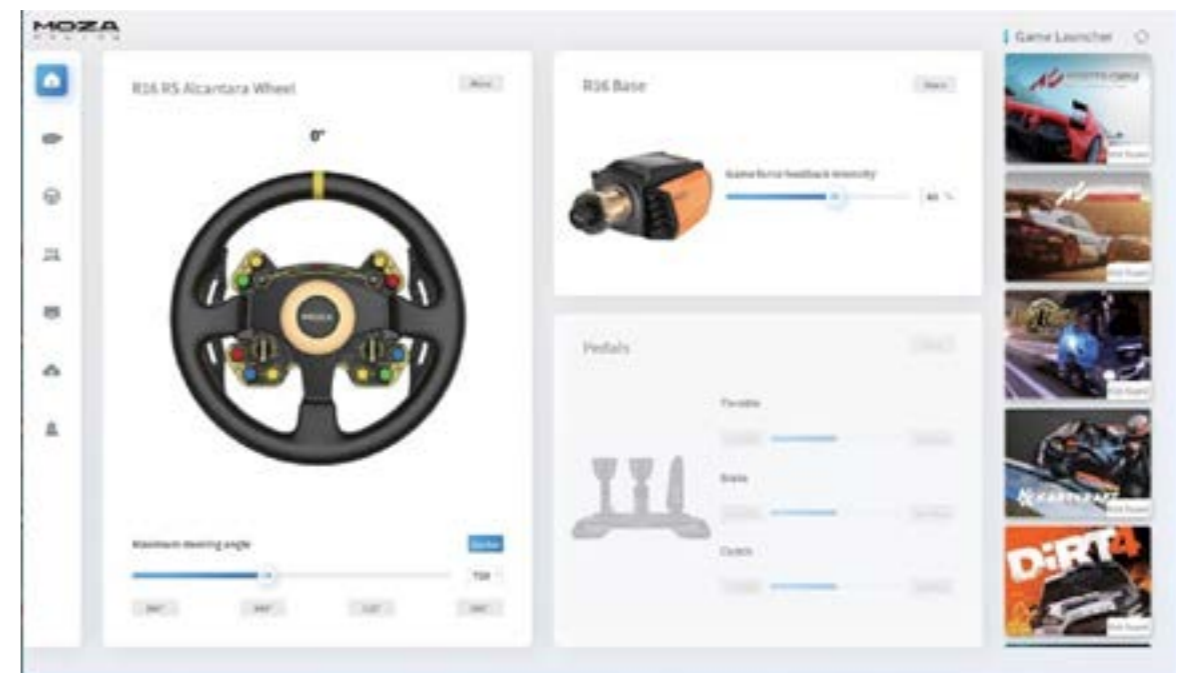
2. Mount the bracket horizontally, align both ends, and then tighten, and secure it to the base with the M4 screws.



3. Insert the interface of the throttle line into the throttle interface found in the control module at the bottom of the brake. Connect the clutch line to the clutch interface in the control module, connect the elbow type-B end of the USB line to the USB interface in the control module, and connect the other end to the PC.

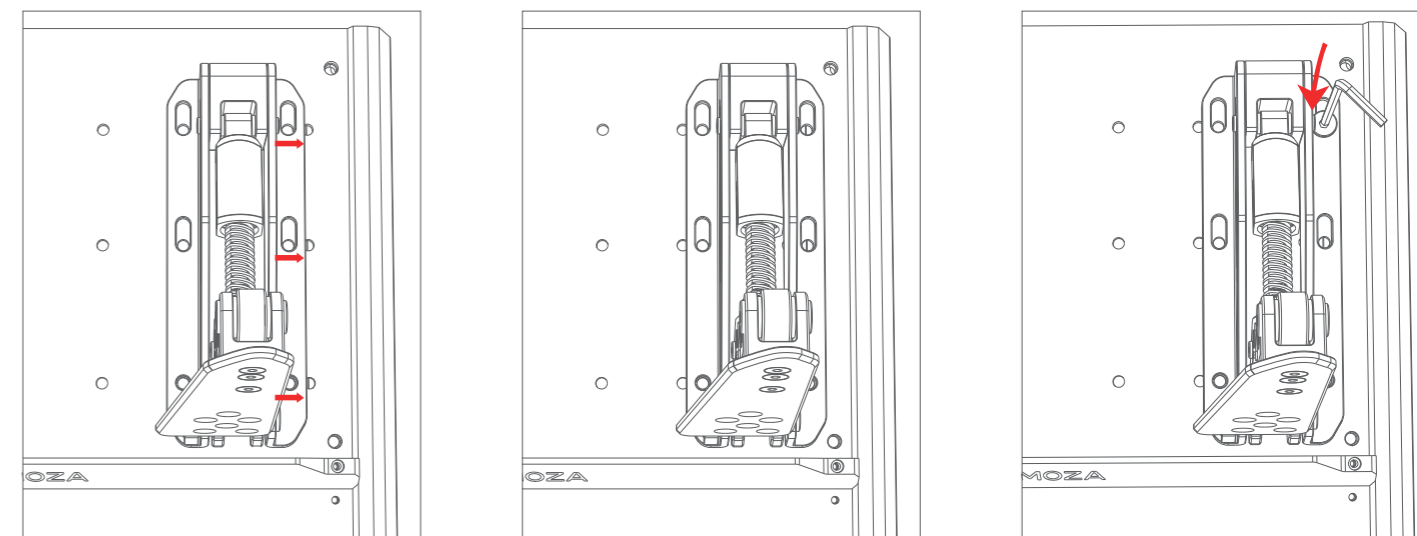
4. The Working status of CRP Pedal can be viewed in the MOZA Pit House. (if the device is still gray or there is no response after stepping on it, please unplug the USB interface at the PC end, close the pit house, re-connect the USB interface, and reopen the MOZA Pit House)

5. The start, end and travel of the pedal can be set in MOZA Pit House.



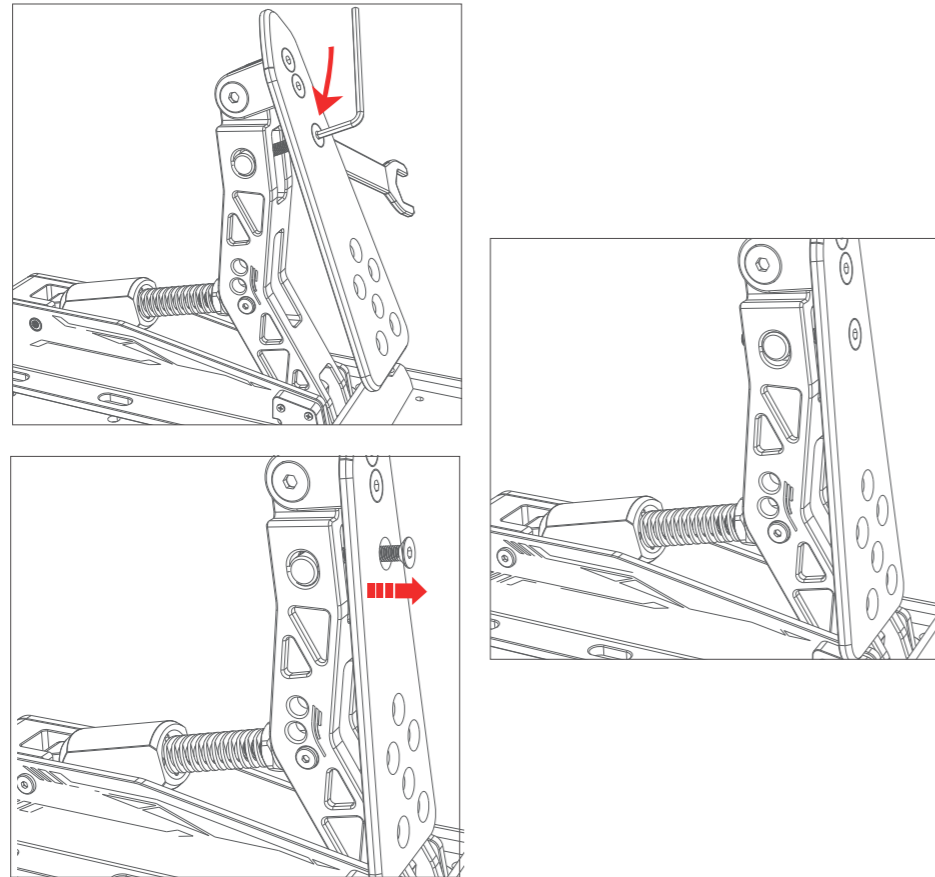
Pedal Spacing Adjustment

Adjust the pedal forward or backwards. Use the included screws to secure the pedal once the correct position has been found.



Pedal Surface Angle Adjustment

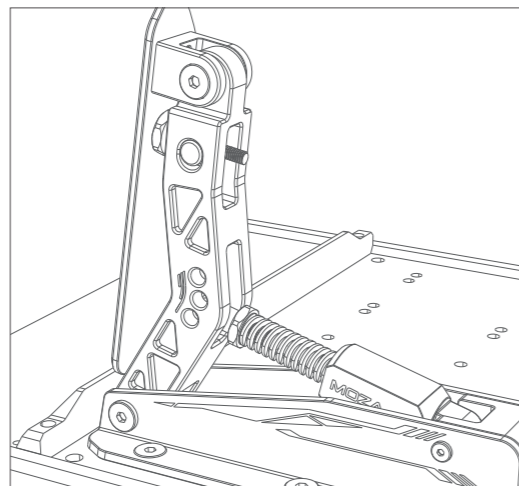
Use a hexagon screwdriver counterclockwise to loosen the screw on the face of the pedal. Use your hand to turn the nut to change the angle of the pedal. To lock in the pedal's position just secure the screw on the face of the pedal. The pedal adjustment methods for accelerator, brake, and clutch are the same.



Accelerator Force and Stroke Adjustment

Twist the adjusting nut to change the Accelerator stroke.

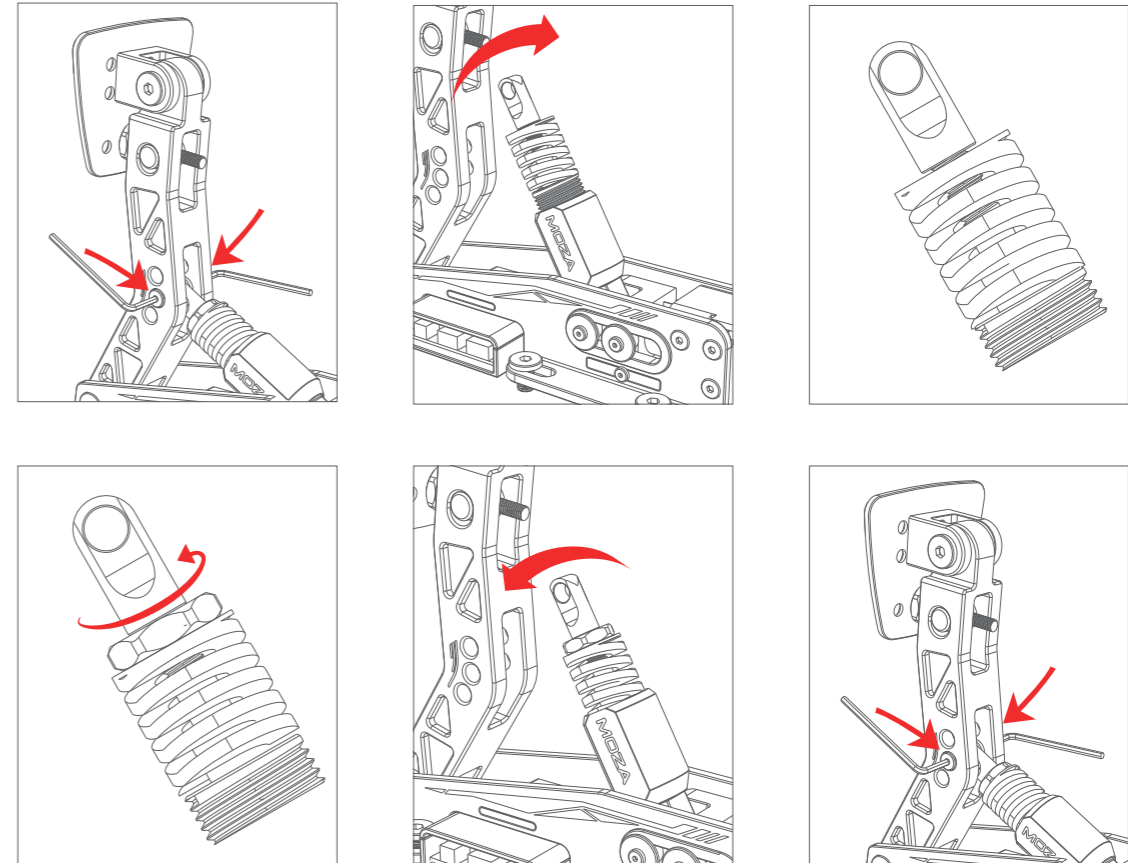
Rotate the adjusting nut on the upper part of the spring by hand. Moving downward will shorten the throttle stroke. Accordingly, the starting force of the throttle will increase, and the ending force will remain unchanged.



Brake Force Adjustment

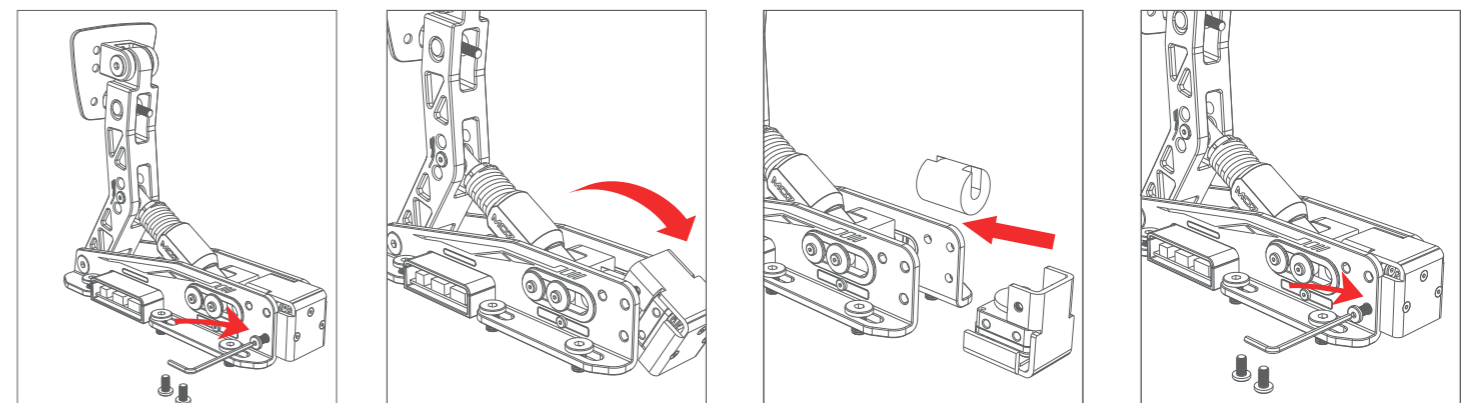
1. Change the spring to adjust braking force

Loosen the screw with the M5 wrench, take out the screw and pin shaft, turn counterclockwise, and take out the spring assembly. Turn counterclockwise the flat nut and remove the spring assembly to push out the spring and shaft, depress the spring. Then turn the flat nut clockwise to unscrew. Swap in the different spring, screw back on the caps. The spring sleeve should be flush with the mounting hole, insert the pin and, tighten the screw.



2. Replace the damping block and change braking force

Remove the two screws on the side with the M5 wrench. Turn the decorative cover plate downward, take out the pressure sensor fixing plate, take out the rubber pad, replace the corresponding rubber pad. Then reassemble.

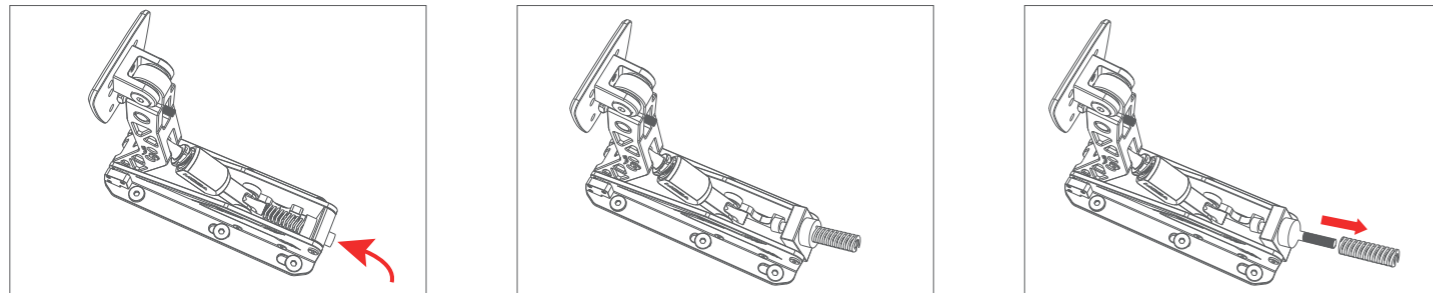


3. Adjust the brake mounting position to change braking force.

Clutch Adjustment

1. Replace the rear end spring and change the separation force curve.

Turn the bolt to take out the spring. Replace the corresponding spring. To test press the pedal's surface by hand.



2. Adjust the clutch mounting position to change the clutch force

Comparison Table of Spring and Rubber Damping Block Strength

	Spring			Damping block		
	Black	Yellow	Red	Soft	Medium	Hard
Brake		Middle	Hard	Soft	Medium	Hard
Clutch	Soft	Middle				



ENVIRONMENTAL PROTECTION RECOMMENDATION

In the European Union: At the end of its working life, this product should not be disposed of with standard household waste, but rather dropped off at a collection point for the disposal of Waste Electrical and Electronic Equipment for recycling.

Depending on their characteristics, the materials may be recycled. Through recycling and other forms of processing Waste Electrical and Electronic Equipment, you can make a significant contribution towards helping to protect the environment.

Please contact your local authorities for information on the collection point nearest you.

WARRANTY

France Simulateur SARL, ensures the consumer that Moza Racing products purchased on its websites or in its stores, the name and address of the customer, the order number, the date of order and the serial number of the product as a reference, must be free of defects of materials and fabrication, for a period of guarantee that corresponds to the time to initiate an action in conformity on this product. In the European Union, this corresponds to a period of two (2) years from the delivery of the product.

In case if the product proves to be defective during the warranty period, please contact Technical Support immediately, who will advise you on the procedure to follow. If the defect is established, the product must be returned to the place of purchase.

Under the terms of this warranty, the consumer's defective product must, at the request of Technical Support, be replaced or restored to functionality.

This warranty does not apply:

- 1.If the product has been modified, opened, altered, or damaged as a result of improper or abusive use, or negligence, an accident, normal use, or any other cause not related to a defect of material or construction.
- 2.During the warranty period, France Simulateur will not, in principle, provide any spare parts, as the support is the only one authorized to open and/or recondition any Moza Racing product.
- 3.If the product was used for a use other than domestic, including at professional ends or commercial ends (rooms of plays, trainings, competitions, events)
- 4.Under no circumstances, France Simulateur can not be held responsible for any direct or indirect consequences of the adaptation of accessories other than the brand MOZA Racing

SUPPORT

MOZA
RACING
support@mozaracing.com

SUPPORT

rseat
the competition
info@rseat-europe.com