

EN


RS Series Steering Wheel Manual



MOZA
R A C I N G

Warning – Injuries due to Force Feedback and repeated movements



Moza wheel bases are very powerful ! 
if you lose control of your car and let go of the wheel during the race of a game, take hold of the wheel again by the grips only and not by the faceplate or shifter paddles, in order to avoid the risk of accidental injury.



Watch your hands ! 
Wearing Racing gloves is recommended to protect your hands, and protect the steering wheel grip.



Warning – Injuries due to Force Feedback and repeated movements

Playing with a Force Feedback racing wheel may cause pain in your muscles or joints.



To avoid any health problems:

- * Avoid lengthy gaming periods.
- * Take 15 minute breaks, after each hour of play.
- * If you feel any fatigue or pain in your eyes, head, hands, wrists, arms, feet, or legs, stop playing and rest for a few hours before you start playing again.
- * If the symptoms or pain indicated persist when you start playing again, stop playing and consult your doctor.
- * Keep out of children's reach.
- * During gameplay, always leave both hands correctly positioned on the wheel without completely letting go.
- * During gameplay, never place your hands or your fingers under the pedals or anywhere near the pedal set.
- * During calibration and gameplay, never place your hand or your arm through the openings in the racing wheel.
- * Make sure that the racing wheel's base is properly secured, as per this manual's instructions.

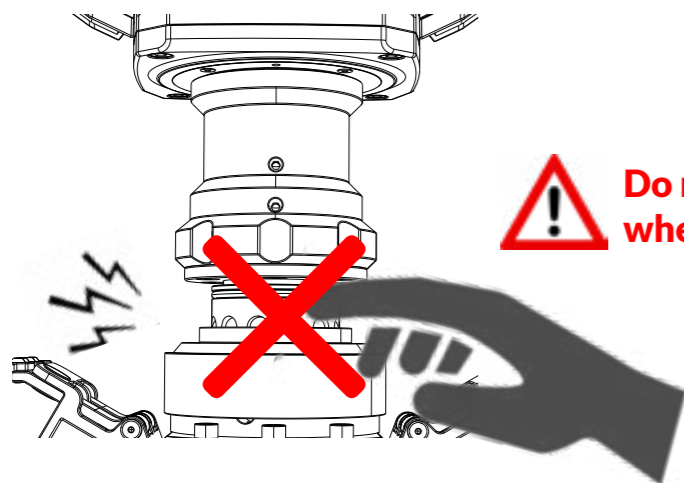


Product to be handled only by users 16 years of age or older

MOZA RS Steering Wheel

This product has a high force feedback strength and small parts. Children are prohibited from use without parental guidance.

- Keep away from loose clothing and easily tangled objects such as hair, cables, skirts, etc.
- This manual is for demonstration purposes only and cannot be used for marketing purposes. It is a general description of a single product (including related series of products). Please refer to the actual product when purchasing.
- The above product pictures and content are for demonstration purposes only. Actual product may differ slightly in external design (including but not limited to appearance, color, size) and content display (including but not limited to background, UI, pictures). Please check the actual product for reference.
- The above test data are all from the MOZA test laboratory, and may not reflect the actual performance factors due to usage conditions and environmental reasons.
- The above contents, such as descriptions, pictures, etc., are subject to change. MOZA may adjust the relevant content according to the performance and specifications of the actual product to provide more accurate product information. Product availability may fluctuate due to unforeseen issues during batch processing or delivery. In this case, MOZA may change the relevant descriptions and pictures, if necessary without prior notice, please check the relevant information through official channels.



Do not leave your fingers behind when locking the quick release.



Before installing and using this product, please read this manual with attention, and save it for later reference.

Product Description

- **Dual-Clutch Photoelectric Magnetic Paddles.**
- **RGB Programmable Flow Shift Light.**
- **Advanced Programmable Buttons and Knobs.**
- **D1 Style Quick Release.**
- **Wireless Technology.**
- **Weight: 4.5 kg**
- **Dimensions: 41.00cm x 41.00cm x 22.00cm**

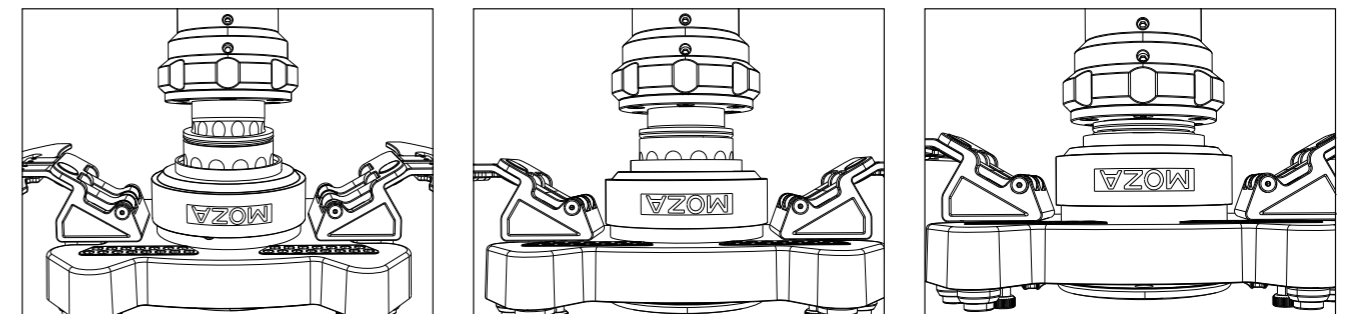
RS-O Racing Wheels



RD Racing Wheels



Steps of quick release

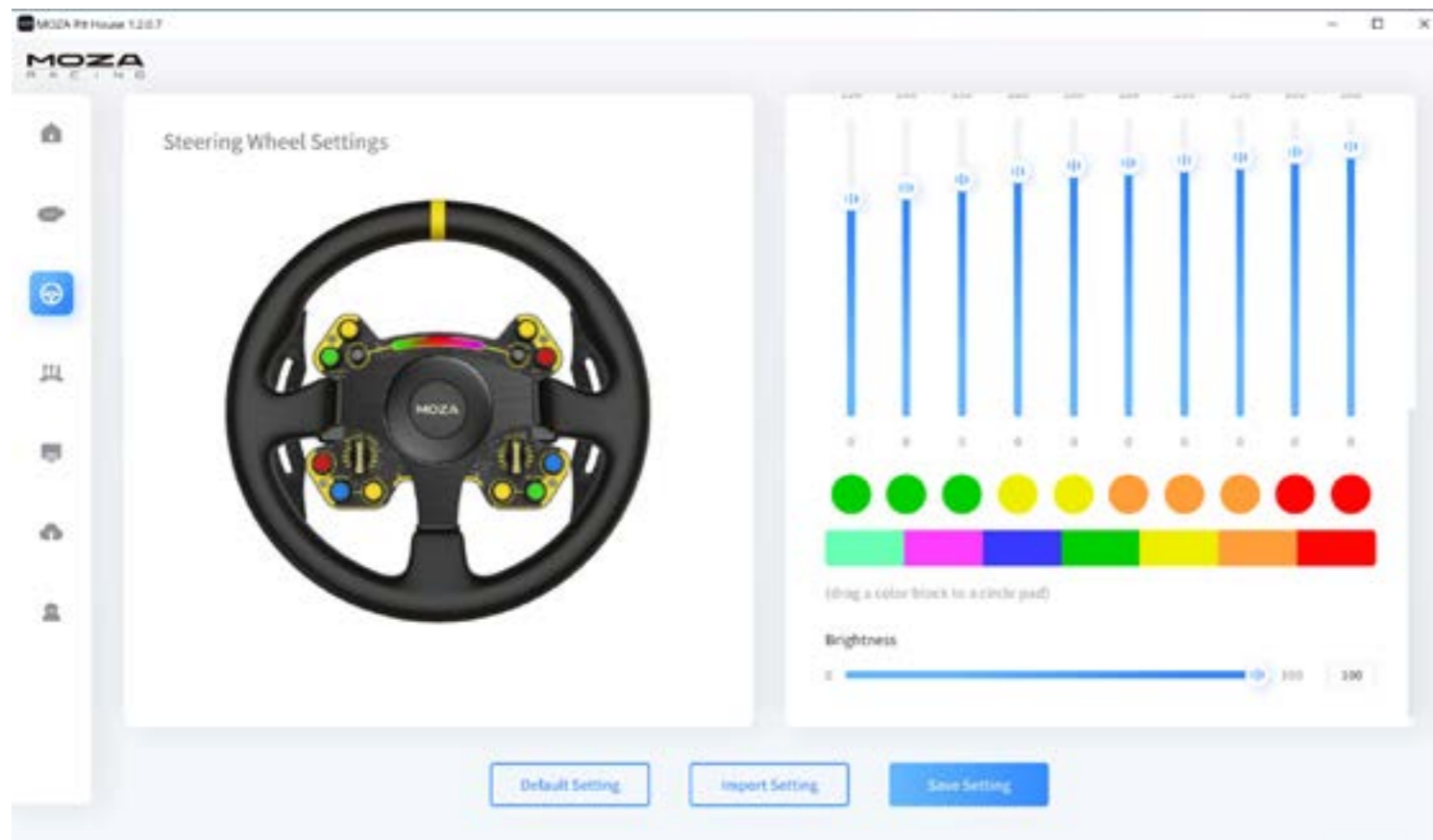


1. Match the position of the 6 steel balls on the female quick release head of the steering wheel to the 6 grooves on the quick release male head of the base
2. Press the quick release to the direction of the panel
3. Quick release will automatically return to the position and lock, if there is no return, you can try to rotate the panel slightly or remove it before installing
4. If you need to remove the disk surface, pinch the golden part with both hands, and pull out the disk surface at the same time

Steering wheel configuration

The steering wheel can be set conveniently and quickly in the MOZA Pit House Software.

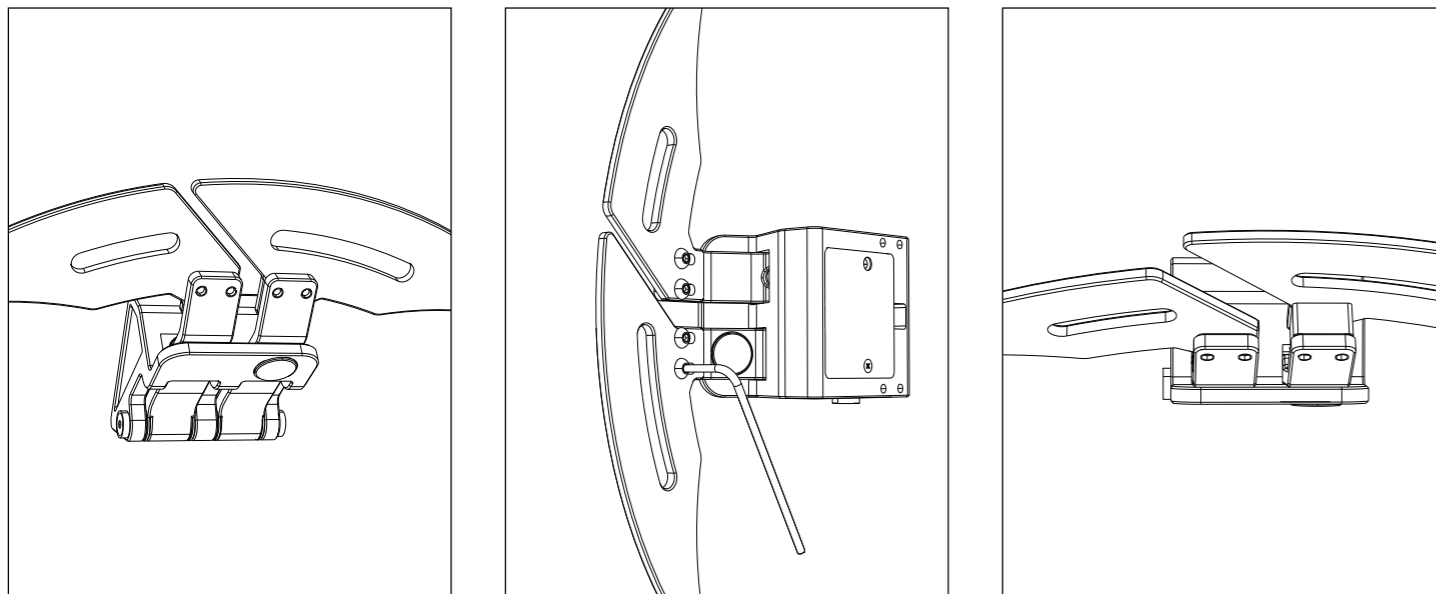
- **Down paddle mode:** Set the mode of double clutch paddles, which can be set as left and right comp site axes, left and right independent axes and keys respectively.
- **Speed follow-up:** Turn on or off the linkage between LED shift indicator and speed.
- **Indicator display mode:** It is divided into mode 1 and mode 2. When the mouse moves over the option, a detailed explanation will pop up.
- **Speed prompt setting:** It is divided into advance type, standard type and limit type. according to the relationship between speed and the time when the shift indicator light is on.
- **Color setting:** 7 colors can be set separately for each LED.
- **Brightness adjustment:** Adjust the brightness of the shift indicator.
- **Dial calibration:** click here to calibrate the dial when the dial sensing is abnormal.



(for detailed steering wheel settings and functions, please visit the official website of MOZA Racing)

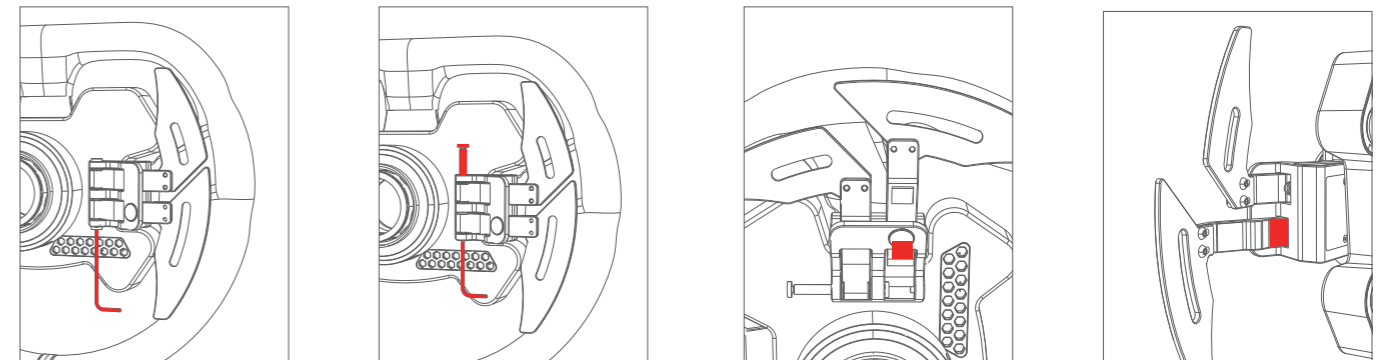
Installation of Paddle Approach Block

Use the hexagon wrench in the screw kit to remove the two screws on the shift paddle, add the heightening block, and tighten it with the attached long screw. Using this gasket, the distance between the paddle and the hand can be shortened by 8mm.



Installation of Magnetic Suction Paddle Mute Pad

Place the steering wheel on a flat surface with the surface facing down, use a hexagonal wrench to remove the screw on one side of the shift paddle trigger rod, and then use a wrench to push the pin from the side of the magnetic suction paddle (it is not necessary to push the pin out completely, only to separate the magnetic suction paddle trigger rod and the pin), and then stick the mute pad on the convex position on the back of the paddle trigger rod, as shown in the figure. Finally, return the latch, and replace the screw.



Product Spec

Frame material: Brushed aluminum alloy.

Panel material: Forged Carbon Fiber.

Rear shell material: Aluminum alloy.

Paddle material: 3mm thick forged carbon fiber

Size: 13 inches (325mm).

Magnetic paddle: 2.

Double clutch paddles: 2.

Mechanical keyboard texture keys: 10. 20 Section knob (can be pressed): 2. Universal rocker (can be d pressed): 2. Racing horn: 1.

LED color: 7-color custom.

Intelligent telemetry: Supported.

Lights setting via **Moza Pit House:** Supported.

Steering Wheel Quick Release: D1 racing quick release.

Power supply mode: Wireless.

Signal transmission mode: Wireless.

Induction mode of magnetic paddle: Photoelectric.

Magnetic suction paddle mode: Double Clutch / Single Clutch / Switch.



ENVIRONMENTAL PROTECTION RECOMMENDATION

In the European Union: At the end of its working life, this product should not be disposed of with standard household waste, but rather dropped off at a collection point for the disposal of Waste Electrical and Electronic Equipment for recycling.

Depending on their characteristics, the materials may be recycled. Through recycling and other forms of processing Waste Electrical and Electronic Equipment, you can make a significant contribution towards helping to protect the environment.

Please contact your local authorities for information on the collection point nearest you.

WARRANTY

France Simulateur SARL, ensures the consumer that Moza Racing products purchased on its websites or in its stores, the name and address of the customer, the order number, the date of order and the serial number of the product as a reference, must be free of defects of materials and fabrication, for a period of guarantee that corresponds to the time to initiate an action in conformity on this product. In the European Union, this corresponds to a period of two (2) years from the delivery of the product.

In case if the product proves to be defective during the warranty period, please contact Technical Support immediately, who will advise you on the procedure to follow. If the defect is established, the product must be returned to the place of purchase.

Under the terms of this warranty, the consumer's defective product must, at the request of Technical Support, be replaced or restored to functionality.

This warranty does not apply:

- 1.If the product has been modified, opened, altered, or damaged as a result of improper or abusive use, or negligence, an accident, normal use, or any other cause not related to a defect of material or construction.
- 2.During the warranty period, France Simulateur will not, in principle, provide any spare parts, as the support is the only one authorized to open and/or recondition any Moza Racing product.
- 3.If the product was used for a use other than domestic, including at professional ends or commercial ends (rooms of plays, trainings, competitions, events)
- 4.Under no circumstances, France Simulateur can not be held responsible for any direct or indirect consequences of the adaptation of accessories other than the brand MOZA Racing

SUPPORT

MOZA
R A C I N G

support@mozaracing.com

SUPPORT

rseat
the competition

info@rseat-europe.com