

// ACTUATORS

1.5 in actuator / 3 in actuator / 6 in actuator

Actuator configurations can be comprised of 2, 3 and 4 actuators. The 2 Actuator Kit delivers two axes of movement (pitch and roll) while the 3 and 4 Actuator Kits deliver three axes of movement (pitch, roll and heave). The HDi model is intended for more robust and intensive usage. Choose between Captive and Non-Captive extremities as well as attachment brackets L and U options (detailed on the reverse side of this sheet).

Performances

Features	250HDi	400HDi
Actuator orientation	Vertical	
Power requirement	120V / (230V with ACM 230S)	
Maximum vertical lift	3" / 76,2 mm	
Maximum velocity	± 100 mm/sec	
Maximum acceleration	± 1 g-force	
Frequency range	0-100 Hz	
Operating T° range	0-40°C	
Operating humidity	10 to 75%	



250HDi
Non-captive extremity

Features	250HDi	400HDi
Max. lifting capacity / Actuator*	250 lb / 114 kg	400 lb / 182 kg
Power Requirement (120V kit)		
- 2 Actuator Kit	120 VAC, 60 Hz, 2,5 A	120 VAC, 60 Hz, 3,3 A
- 3 Actuator Kit	120 VAC, 60 Hz, 3,5 A	120 VAC, 60 Hz, 5 A
- 4 Actuator Kit	120 VAC, 60 Hz, 5 A	120 VAC, 60 Hz, 6,5 A
Power Requirement (230V kit)		
- 2 Actuator Kit	230 VAC, 60 Hz, 1,5 A	230 VAC, 60 Hz, 2A
- 3 Actuator Kit	230 VAC, 60 Hz, 2 A	230 VAC, 60 Hz, 2,5 A
- 4 Actuator Kit	230 VAC, 60 Hz, 2,5 A	230 VAC, 60 Hz, 3,5 A
MTBF**	Average of 8 years depending on total load, movement intensity, frequency and acceleration. Call to inquire.	
Electric consumption***	2 actuators setup 17\$ / year ; 4 actuators setup 32\$ / year	

* Weight distribution must be evenly spread on the activated motion platform to ensure Actuator maximum payload, inquire for more information.

** Based on a scenario of 160 lb per actuator (250HDi) with intense motion codes, 8 hours per day. 250 lb per actuator (400HDi) with intense motion codes 8 hours per day.

*** Based on a scenario of 250 lb, 8 hours per day at a cost of 0.08 \$ kW/h.

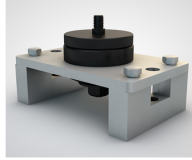


Extremities & Brackets

Actuator extremities can be captive or non captive.

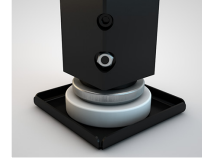
Captive

Allows the actuator to be attached to a sub-platform or on solid ground



Non Captive

For free flowing push against the floor with provided cupholder



L Bracket

To attach the actuators beneath the platform



U Brackets

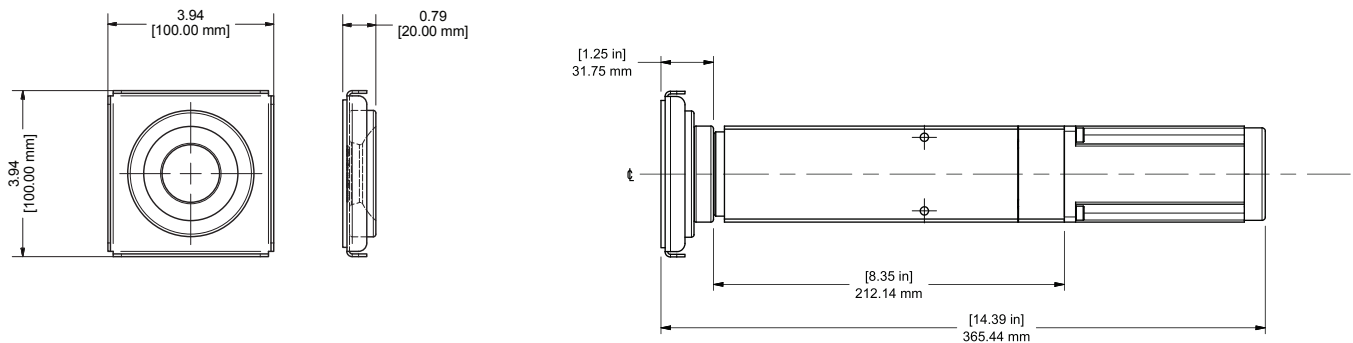
To attach the actuators to the side of the platform



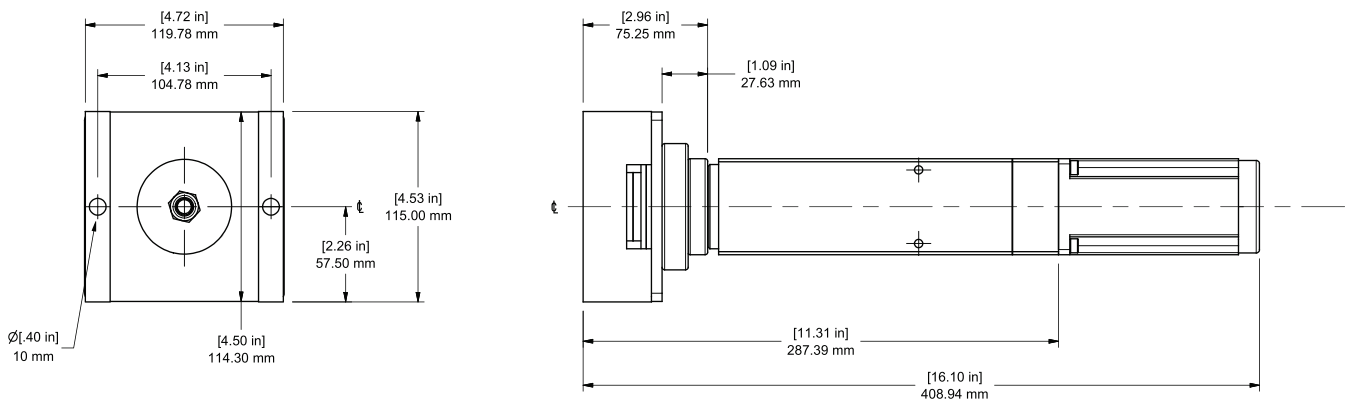
Overall dimensions

The 250HDI model is shown below. For specific information regarding other models, please email: simulation@d-box.com

Non-captive



Captive



© 2014 D-BOX Technologies. All Rights Reserved. Specifications are subject to change without notice. D-BOX is a registered trademark. All other brand or product names are trademarks of their respective owners. Product photos and pictures are for illustration purposes only and may differ from the real product's appearance.



d-box.com

000-951-0022-EN1 - Printed in Canada